

# Creating a meeting space for people – a new roof for the SMS Campus in Mönchengladbach, Germany.

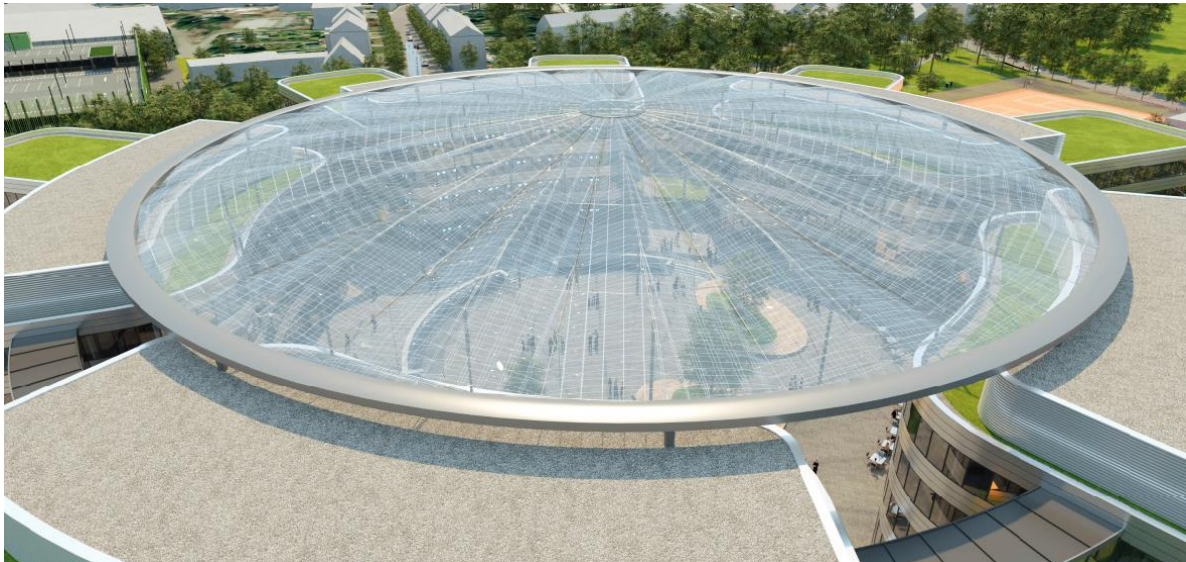
Thomas Hermeking\*

\* PFEIFER Structures

Dr. Karl Lenz Str. 66, 87700 Memmingen, Germany

e-mail: [thermeking@pfeifer.de](mailto:thermeking@pfeifer.de), web page: <http://www.pfeifer.info/structures>

## ABSTRACT



To provide space where people can meet and communicate is always a preferred request for PFEIFER as a lightweight-architecture specialist contractor. Building its new headquarters, the SMS Group wants to create a meeting hub in the middle of its new office buildings. According to the high-end portfolio of the Client, the expectations for structural engineering, materials and quality have been set top of the scale.

A compression ring welded from plates is carrying a cable structure dome. The 4,900 sqm of the plaza are then covered by ETFE cushions made from highly translucent foils. This way the lightest possible appearance is achieved for the roof structure.

The presentation will cover the design process, the configuration of the roof elements from PFEIFER's own production basis and the erection of the structure. Being much lighter than a glass panel roof would ever be, the ETFE roof combines durability, easy-cleaning and sustainability, making it the ideal solution for sheltering roof structures of all sizes.

## KEYWORDS

Lightweight structures, Lightweight-architecture, ETFE, translucent, cable structure, durability, sustainable

## REFERENCES

[1] none